


COUNTRY LIFE 1909

“THE DAIRY ITSELF IS ONE OF
THE MOST CHARMING WE HAVE
EVER SEEN. WE DOUBT IF THERE
IS A MORE BEAUTIFUL ONE IN
GREAT BRITAIN.”





“A WONDERFULLY
ROMANTIC BACKDROP FOR
THE PERFECT WEDDING AT
ANY TIME OF YEAR”



CONGRATULATIONS



WEDDINGS AT WADDESDON

Nestling in a tranquil waterside setting amidst glorious gardens, the Dairy is an enchanting private building on the Waddesdon Estate, created by Baron Ferdinand de Rothschild in the 19th century and for over 100 years the country retreat of the Rothschild family. You and your guests can enjoy a taste of that privileged lifestyle: superlative food, excellent wines and friendly, professional service with absolute exclusivity guaranteed.

CAPACITIES

RELIGIOUS/CELEBRANT
CEREMONIES:

UP TO 250

CIVIL CEREMONIES:

UP TO 160

INSIDE DINING :

UP TO 180

OUTSIDE DINING:

UP TO 250 WITH A STRUCTURE OVER THE COURTYARD



EXCLUSIVELY YOURS

WHEN YOU HIRE THE DAIRY, YOU AND YOUR GUESTS WILL HAVE EXCLUSIVE ACCESS TO THE ENTIRE VENUE WITH ALL OF ITS ONE-OF-A-KIND SPACES...



THE DAIRY'S SPACES

- 1 WINTERGARDEN
- 2 SOUTH HALL
- 3 WEST HALL
- 4 COURTYARD
- 5 THE TERRACE
- 6 THE BUTTERY
- 7 DIEPPE ROOM
- 8 DAIRY COTTAGE



COURTYARD



Guests enter The Dairy via the peaceful inner courtyard, ideal for outdoor ceremonies or entertaining.

PERFECT FOR:

Ceremonies, Entertaining, Drinks
Receptions





THE TERRACE & LAKE



Running along its entirety is a wide terrace with two pavilions extending out over the lake, ideal for summer drinks receptions.

PERFECT FOR:
Ceremonies, Drinks Receptions

WEST HALL



An impressive room with vaulted ceiling and two huge open fireplaces, the West Hall can seat up to 180 guests for dining. Additional guests, up to a total maximum of 200, may be invited for dancing and evening entertainment. Doors from the West Hall open directly onto the terrace.

PERFECT FOR:
Dining & Dancing





WINTERGARDEN



Adjoining the West Hall, this classical room is made predominantly of glass with exterior wooden slatted blinds and has as its focal point a Roman sarcophagus, now used as a water feature. The stone floors in this room make it ideal for dancing.

PERFECT FOR:
Dining & Dancing



SOUTH HALL



Adjacent to the peaceful inner courtyard the South Hall is full of art and contemporary styling making it the perfect space for fine dining.



PERFECT FOR:
Dining & Dancing





THE BUTTERY



Positioned next to the main building and surrounded by gardens and sculpture, The Buttery is the perfect space to get ready for your big day.

PERFECT FOR:
Bridal Party





THE WEDDING CAKE

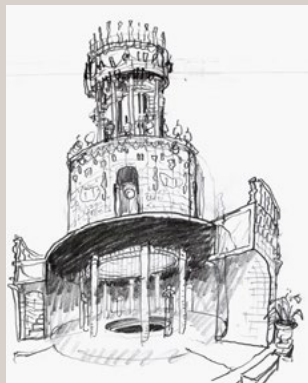
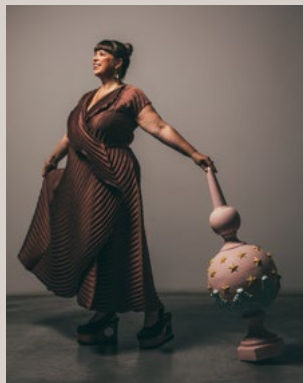
JOANA VASCONCELOS

Wedding Cake - a 12-metre-high sculptural pavilion in the form of a three-tiered wedding cake, clad entirely in ceramic tiles - is a major new work by celebrated Portuguese artist Joana Vasconcelos (b 1971). Almost five years in the making, Wedding Cake was commissioned by the Rothschild Foundation for Waddesdon, prompted by the relationship between visionary collector Lord Rothschild and Vasconcelos.

Part sculpture, part architectural garden folly, Wedding Cake is an extraordinary, enormous fully immersive sculpture which combines patisserie and architecture. Gleaming and icing-like outside and in, it offers an intricate and richly sensory experience – glazed in pale pinks, greens and blues, beset with sculptural ornament and complete with the sounds of trickling water and a site-specific lighting scheme. Wedding Cake is Vasconcelos' most ambitious commission to date, described by the artist as “a temple to love” that celebrates festivity and marriage.

Inspired by the exuberant Baroque buildings and highly decorative ceramic traditions of Lisbon - where Vasconcelos lives and works - the work is also a contemporary response to the great Rothschild traditions of hospitality with echoes of 18th-century garden pavilions.

Couples will be given the option to go to the top of the sculpture and pose as cake toppers, the perfect photo opportunity for on your special day!



THE DAIRY COTTAGE



Our newly refurbished charming Dairy Cottage sits beautifully by the venue and is only a stone's throw from The Five Arrows. A perfect spot for the bridal party or for the bride and groom.

SLEEPS:

Up To 4

PERFECT FOR:

Bride & Groom, Bridal Party



DRY HIRE

Prices for The Dairy include overnight stay at The Dairy Cottage. Access The Dairy from 8am on the day of your wedding and party the night away by making the most of our 12am license. The Dairy can only be hired in its entirety and all rooms within the venue are included. Dry hire only.

	LOW SEASON JANUARY, FEBRUARY, NOVEMBER	MID SEASON (FRI, WEEKEND, BANK HOLIDAYS) MARCH, APRIL, OCTOBER	MID SEASON (MONDAY-THURSDAY) MARCH, APRIL, OCTOBER	HIGH SEASON (FRI, WEEKEND, BANK HOLIDAYS) MAY, JUNE, JULY, AUG, SEPT, DEC	HIGH SEASON (MONDAY-THURSDAY) MAY, JUNE, JULY, AUG, SEPT, DEC
2024	£8,450	£13,450	£11,450	£15,450	£13,450
2025	£9,450	£14,450	£12,450	£16,450	£14,450

ACCOMMODATION

All 16 bedrooms at The Five Arrows Hotel £4,050

All prices quoted are inclusive of VAT, subject to change without notice and subject to contract.



WEDDINGS

THE INSPIRATION A ROTHSCHILD TREASURY

Tucked away at the very top of Waddesdon Manor is a small, glowing room filled with extraordinary objects collected by one family. The Rothschild Treasury is a showcase of precious natural materials, from gold, amber and rock crystal to gleaming gemstones set as wonderful jewellery. Your Emerald or Garnet wedding is inspired by this unique collection.

WEDDING 1

THE GARNET



THE GARNET EXPERIENCE...

Includes exclusive hire of The Dairy for 48 hours, 2 night stay at The Dairy Cottage (including 2 double bedrooms and a beautiful breakfast hamper on the day of the wedding), use of all 16 rooms at the Five Arrows (including 1 Bridal Suite, 2 Luxury Suites), a luxury breakfast for overnight guests at The Five Arrows, ceremony facility fee, 6 uplighters, 2 oil lamp chandeliers, PA system, roof lighting and a dedicated point of contact from our team and a venue manager on the day. Access The Dairy from 8am on the day of your wedding and party the night away by making the most of our 12am license.

CATERING BY AP & CO - Includes canapes, sparkling drinks reception with cocktails, 3 course wedding breakfast with tea, coffee, petit fours and wine, an evening bar reception, late night bites, a dedicated team, table styling and furnishings, full cloakroom and a wedding service of your dreams.

FLORISTRY BY VEEVERS CARTER - Includes 1 Bridal Bouquet, 4 Bridesmaids Bouquets, 6 buttonholes, 2 urn arrangements, 2 mantelpiece arrangements, 1 registrars table flowers, 12 tables arrangements and 3 poser table arrangements.

CAKE BY THE ABIGAIL BLOOM CAKE COMPANY - Includes a 2 flavour, 6 tier wedding cake.

WEDDING SCENT BY FLORENCE AND BEE - 15 Waddesdon Garnet scent candles.

STARTING FROM £87,000

WEDDING 2

THE AMBER



THE AMBER EXPERIENCE...

Includes exclusive hire of The Dairy for 48 hours, 2 night stay at The Dairy Cottage (including 2 double bedrooms and a beautiful breakfast hamper on the day of the wedding), use of all 16 rooms at the Five Arrows (including 1 Bridal Suite, 2 Luxury Suites), a luxury breakfast for overnight guests at The Five Arrows, ceremony facility fee, 6 uplighters, 2 oil lamp chandeliers, PA system, roof lighting and a dedicated point of contact from our team and a venue manager on the day. Access The Dairy from 8am on the day of your wedding and party the night away by making the most of our 12am license.

CATERING BY HOST HOSPITALITY - Includes canapes, sparkling drinks reception with cocktails and beer, 3 course wedding breakfast with Waddesdon wine collection pairings, an evening bar for reception, late night bites, a dedicated team, table styling and furnishings, a wedding service of your dreams.

FLORISTRY BY LAVENDER GREEN - Includes 1 Bridal Bouquet, 4 Bridesmaids Bouquets, 6 buttonholes, statement arrangements, urn arrangements, poseur tables arrangements and table arrangements for wedding breakfast.

CAKE BY HALL OF CAKES - A 4 tier wedding cake (comprising 3 real tiers and 1 fake tier).

WEDDING SCENT BY FLORENCE AND BEE - 15 Waddesdon Amber scent candles.

STARTING FROM £66,500

WEDDING 3

THE EMERALD

THE EMERALD EXPERIENCE...

Includes exclusive hire of The Dairy for 48 hours, 2 night stay at The Dairy Cottage (including 2 double bedrooms and a beautiful breakfast hamper on the day of the wedding), use of all 16 rooms at The Five Arrows on the night of the wedding (including 1 Bridal Suite) and luxury breakfast for overnight guests, ceremony facility fee, 6 uplighters, 2 oil lamp chandeliers, 2 lit fireplaces, PA system, roof lighting and a dedicated point of contact from our team and a venue manager on the day. Access The Dairy from 8am on the day of your wedding and party the night away by making the most of our 12am license.

CATERING BY CAVENDISH EVENTS - Includes canapes, sparkling drinks reception, 3 course wedding breakfast with tea, coffee, petit fours and wine, still and sparkling water, an evening bar reception is provided offering account or full bar services, late night bites, dedicated team, table styling and furnishings and a day planned to perfection.

FLORISTRY BY JF FLOWERS - Includes 1 Bridal Bouquet, 4 Bridesmaids Bouquets, 6 buttonholes, 2 pedestal arrangements, 1 registrars table flowers or 2 small displays for the fireplaces, Nightlights for the fireplace mantles and 12 tables arrangements.

CAKE BY LINDSAY PEMBERTON - Includes a 3 tier wedding cake either buttercream or fondant icing.

WEDDING SCENT BY FLORENCE AND BEE - 15 Waddesdon Emerald scent candles.

STARTING FROM £43,000

Contact us for further information.



PRICING

GARNET	LOW SEASON JANUARY, FEBRUARY, NOVEMBER	MID SEASON (FRI, WEEKEND, BANK HOLIDAYS) MARCH, APRIL, OCTOBER	MID SEASON (MONDAY-THURSDAY) MARCH, APRIL, OCTOBER	HIGH SEASON (FRI, WEEKEND, BANK HOLIDAYS) MAY, JUNE, JULY, AUG, SEPT, DEC	HIGH SEASON (MONDAY-THURSDAY) MAY, JUNE, JULY, AUG, SEPT, DEC
2024	£87,000	£92,000	£90,000	£94,000	£92,000
2025	£88,000	£93,000	£91,000	£95,000	£93,000

AMBER	LOW SEASON JANUARY, FEBRUARY, NOVEMBER	MID SEASON (FRI, WEEKEND, BANK HOLIDAYS) MARCH, APRIL, OCTOBER	MID SEASON (MONDAY-THURSDAY) MARCH, APRIL, OCTOBER	HIGH SEASON (FRI, WEEKEND, BANK HOLIDAYS) MAY, JUNE, JULY, AUG, SEPT, DEC	HIGH SEASON (MONDAY-THURSDAY) MAY, JUNE, JULY, AUG, SEPT, DEC
2024	£66,500	£71,500	£69,500	£73,500	£71,500
2025	£70,000	£75,000	£73,000	£77,000	£75,000

EMERALD	LOW SEASON JANUARY, FEBRUARY, NOVEMBER	MID SEASON (FRI, WEEKEND, BANK HOLIDAYS) MARCH, APRIL, OCTOBER	MID SEASON (MONDAY-THURSDAY) MARCH, APRIL, OCTOBER	HIGH SEASON (FRI, WEEKEND, BANK HOLIDAYS) MAY, JUNE, JULY, AUG, SEPT, DEC	HIGH SEASON (MONDAY-THURSDAY) MAY, JUNE, JULY, AUG, SEPT, DEC
2024	£43,000	£48,000	£46,000	£50,000	£48,000
2025	£46,000	£51,000	£49,000	£53,000	£51,000

All prices are quoted inclusive of VAT, subject to change without notice and subject to contract.

We have two beautiful churches less than 10 minutes from Waddesdon:

ST. MICHAEL AND ALL ANGELS, WADDESDON



St. Michael and all Angels in Waddesdon can be seen from The Dairy and is a large imposing Grade II* listed building dating from the 12th Century and can fit over 200 guests.

ST. MARY MAGDALENE, UPPER WINCHENDON



St. Mary Magdalene in Upper Winchendon is less than 10 minutes' drive from Waddesdon and is perched on a hill overlooking the valley, this little gem of a church has remained untouched since the middle-ages and can fit 150 guests.



CATERING

We have carefully selected our preferred suppliers who will work with you on creating the perfect menu.



CAVENDISH EVENTS

Buckinghamshire based specialists in amazing and exceptional luxury weddings.

food@cavendishevents.co.uk



AP&CO

Designing events with the finest food and drink, in the most magnificent settings, delivered with impeccable service. That is AP&Co's purpose. London's go to luxury event caterer since 1981.

enquiries@alisonprice.co.uk



HOST HOSPITALITY

"What sets us apart is our innovation, attention to detail and our ability to tailor our services around our clients' needs."

events@hosthospitality.co.uk



ABSOLUTE TASTE

What they can't source to their high standards, they grow, make, farm or mature themselves – from their own butchery, charcuterie and salt aged meats, to roasting their own coffee and maturing their own cheeses.

www.absolutetaste.com



TONY PAGE

KOSHER

Inimitable reputation founded on an obsession to deliver on every detail.

www.tonypage.com



PAYAL

ASIAN / INDIAN

Luxury catering company, event planners and event production specialists.

info@payal.co.uk



BUBBLE

Bubble has been designing and catering spectacular luxury events for over 20 years. With accreditations at London's historic palaces, unique venues & contemporary spaces.

www.bubblefood.com



BEN TENENBLAT

"Since entering the catering market, Ben Tenenblat have redefined luxury Kosher cuisine, opening up a new world of culinary possibilities for their clients."

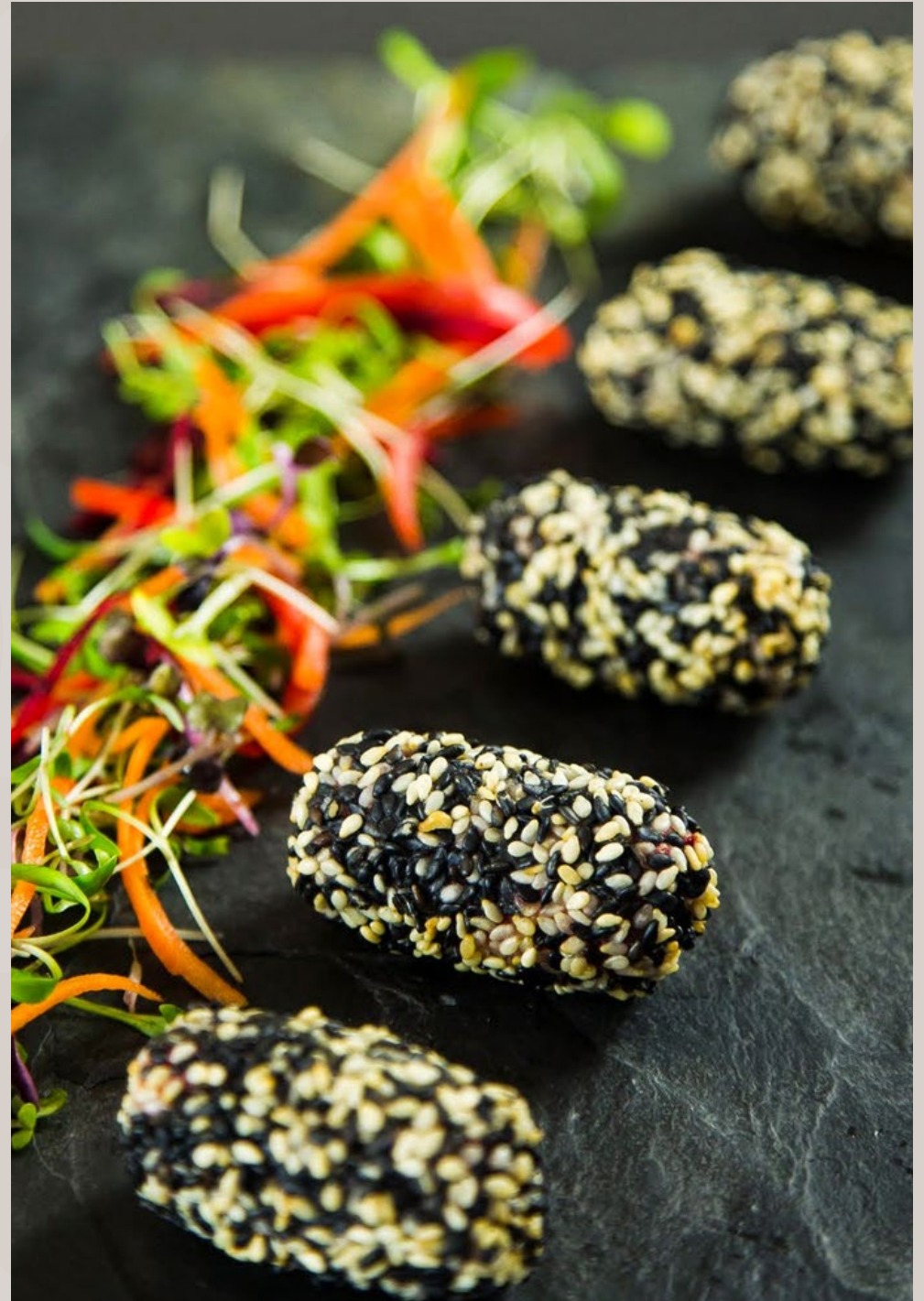
Info@Ben-Tenenblat.com



RAGASAAN

"Quite simply, we'll provide professional, seamless event management, with a special mix of cuisine and décor that will leave you and your guests incredibly satisfied!"

www.ragasaan.com





WORLD CLASS WINES



WINES FROM OUR OWN ESTATES

We are proud to exclusively partner with Waddesdon Wine Limited. Waddesdon Wine was founded to jointly represent the three wine producing branches of the Rothschild family within the UK. They have now grown to represent a number of other prestigious family owned estates around the world. Our caterers will offer you a wide range of Rothschild wines to accompany your wedding breakfast.





THE FIVE ARROWS



HOME FOR YOU AND YOUR GUESTS

All 16 of our bedrooms have been refurbished to the highest standard; maintaining the historical legacy of the Five Arrows, but adding a contemporary feel to maximise guest comfort. The decor has been chosen to emphasise the feeling of comfort and is inspired by nature, with soft, calm colours and layers of wools and linens.





FURTHER ACCOMMODATION



HARTWELL HOUSE

Adjoining the waddesdon estate sits hartwell house and spa, a 17th-century property set within 90 acres of gardens and parkland.

waddesdonenterprises.co.uk/hartwell-house

THE DINTON HERMIT

Situated in the hamlet of Ford in a beautiful rural location, The Dinton Hermit is a charming 17th century Grade II listed country inn.

thedintonhermit.co.uk/sleep



LE MANOIR AUX QUAT'SAISONS

Created by celebrated chef Raymond Blanc OBE, Le Manoir aux Quat'Saisons is one of the country's most cherished manor house hotels.

belmond.com



PLANNING AND ON THE DAY COORDINATION



MRS T WEDDINGS
www.mrstweddings.com



ROHITA PABLA
www.rohitapabla.co.uk



RADHIKA NATHWANI
WEDDING PLANNER / ON THE DAY COORDINATION
www.radhikaandyou.com



CRANBERRY BLUE
www.cranberryblue.co.uk



ANN NICHOLAS WEDDINGS
www.ann-nicholas.com



BY CHENAI
www.bychenai.com



OCCASION QUEENS
ON THE DAY COORDINATION
www.occasionqueens.com

TEMPORARY STRUCTURE



TITAN TENTS
www.titantents.co.uk



MARQUEES & PAVILIONS LTD
www.marpav.co.uk



JB MARQUEES
www.josephbenjaminmarquees.co.uk

THE EPITOME OF BREATH-TAKING SPLENDOUR,
WEDDINGS AT WADDESDON MANOR & GROUNDS
WITH CAPACITIES UP TO 1000.



BROCHURE AVAILABLE ON REQUEST



WWW.WADDESDONENTERPRISES.CO.UK
ENTERTAINING@WADDESDON.ORG.UK
01296 653 241