






COUNTRY LIFE 1909

“THE DAIRY ITSELF IS ONE OF  
THE MOST CHARMING WE HAVE  
EVER SEEN. WE DOUBT IF THERE  
IS A MORE BEAUTIFUL ONE IN  
GREAT BRITAIN.”







“A WONDERFULLY  
ROMANTIC BACKDROP FOR  
THE PERFECT WEDDING AT  
ANY TIME OF YEAR”





CONGRATULATIONS



## WEDDINGS AT WADDESDON

Nestling in a tranquil waterside setting amidst glorious gardens, the Dairy is an enchanting private building on the Waddesdon Estate, created by Baron Ferdinand de Rothschild in the 19th century and for over 100 years the country retreat of the Rothschild family. You and your guests can enjoy a taste of that privileged lifestyle: superlative food, excellent wines and friendly, professional service with absolute exclusivity guaranteed.

### CAPACITIES

RELIGIOUS/CELEBRANT  
CEREMONIES:

UP TO 250

CIVIL CEREMONIES:

UP TO 160

INSIDE DINING :

UP TO 180

OUTSIDE DINING:

UP TO 250 WITH A STRUCTURE OVER THE COURTYARD





# EXCLUSIVELY YOURS

WHEN YOU HIRE THE DAIRY, YOU AND YOUR GUESTS WILL HAVE EXCLUSIVE  
ACCESS TO THE ENTIRE VENUE WITH ALL OF ITS ONE-OF-A-KIND SPACES...





# THE DAIRY'S SPACES

- 1 WINTERGARDEN
- 2 SOUTH HALL
- 3 WEST HALL
- 4 COURTYARD
- 5 THE TERRACE
- 6 THE BUTTERY
- 7 DIEPPE ROOM
- 8 DAIRY COTTAGE





# COURTYARD



Guests enter The Dairy via the peaceful inner courtyard, ideal for outdoor ceremonies or entertaining.

## PERFECT FOR:

Ceremonies, Entertaining, Drinks  
Receptions







## THE TERRACE & LAKE



Running along its entirety is a wide terrace with two pavilions extending out over the lake, ideal for summer drinks receptions.

### PERFECT FOR:

Ceremonies, Drinks Receptions



# WEST HALL



An impressive room with vaulted ceiling and two huge open fireplaces, the West Hall can seat up to 180 guests for dining. Additional guests, up to a total maximum of 200, may be invited for dancing and evening entertainment. Doors from the West Hall open directly onto the terrace.

PERFECT FOR:  
Dining & Dancing







## WINTERGARDEN



Adjoining the West Hall, this classical room is made predominantly of glass with exterior wooden slatted blinds and has as its focal point a Roman sarcophagus, now used as a water feature. The stone floors in this room make it ideal for dancing.

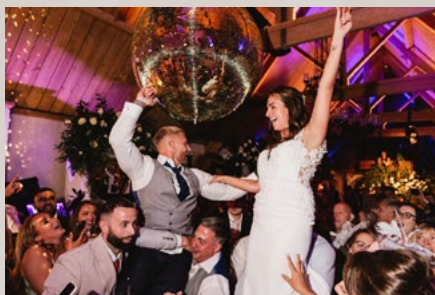
### PERFECT FOR:

Dining & Dancing





# SOUTH HALL



Adjacent to the peaceful inner courtyard the South Hall is full of art and contemporary styling making it the perfect space for fine dining.

PERFECT FOR:  
Dining & Dancing







## THE BUTTERY



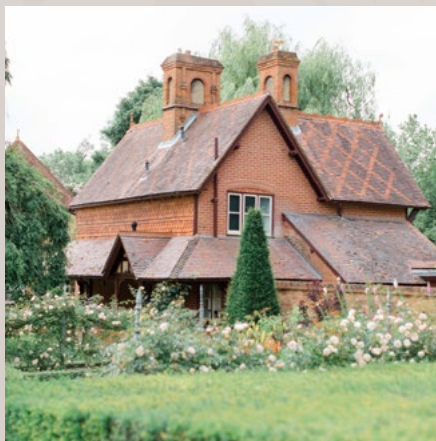
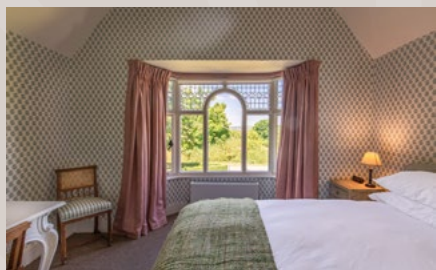
Positioned next to the main building and surrounded by gardens and sculpture, The Buttery is the perfect space to get ready for your big day.

PERFECT FOR:  
Bridal Party





# THE DAIRY COTTAGE



Our newly refurbished charming Dairy Cottage sits beautifully by the venue and is only a stone's throw from The Five Arrows. A perfect spot for the bridal party or for the bride and groom.

## SLEEPS:

Up To 4

## PERFECT FOR:

Bride & Groom, Bridal Party





DRY HIRE

Prices for The Dairy include overnight stay at The Dairy Cottage. Access The Dairy from 8am on the day of your wedding and party the night away by making the most of our 12am license. The Dairy can only be hired in its entirety and all rooms within the venue are included. Dry hire only.

	LOW SEASON JANUARY, FEBRUARY, NOVEMBER	MID SEASON (FRI, WEEKEND, BANK HOLIDAYS) MARCH, APRIL, OCTOBER	MID SEASON (MONDAY-THURSDAY) MARCH, APRIL, OCTOBER	HIGH SEASON (FRI, WEEKEND, BANK HOLIDAYS) MAY, JUNE, JULY, AUG, SEPT, DEC	HIGH SEASON (MONDAY-THURSDAY) MAY, JUNE, JULY, AUG, SEPT, DEC
2024	£8,450	£13,450	£11,450	£15,450	£13,450
2025	£9,450	£14,450	£12,450	£16,450	£14,450

ACCOMMODATION

All 16 bedrooms at The Five Arrows Hotel £4,050

All prices quoted are inclusive of VAT, subject to change without notice and subject to contract.





## WEDDINGS

### THE INSPIRATION A ROTHSCHILD TREASURY

Tucked away at the very top of Waddesdon Manor is a small, glowing room filled with extraordinary objects collected by one family. The Rothschild Treasury is a showcase of precious natural materials, from gold, amber and rock crystal to gleaming gemstones set as wonderful jewellery. Your Emerald or Garnet wedding is inspired by this unique collection.



## WEDDING 1

### THE EMERALD



#### THE EMERALD EXPERIENCE...

Includes exclusive hire of The Dairy for 48 hours, 2 night stay at The Dairy Cottage (including 2 double bedrooms and a beautiful breakfast hamper on the day of the wedding), use of all 16 rooms at The Five Arrows on the night of the wedding (including 1 Bridal Suite) and luxury breakfast for overnight guests, ceremony facility fee, 6 uplighters, 2 oil lamp chandeliers, 2 lit fireplaces, PA system, roof lighting and a dedicated point of contact from our team and a venue manager on the day. Access The Dairy from 8am on the day of your wedding and party the night away by making the most of our 12am license.

CATERING BY CAVENDISH EVENTS - Includes canapes, sparkling drinks reception, 3 course wedding breakfast with tea, coffee, petit fours and wine, still and sparkling water, an evening bar reception is provided offering account or full bar services, late night bites, dedicated team, table styling and furnishings and a day planned to perfection.

FLORISTRY BY JF FLOWERS - Includes 1 Bridal Bouquet, 4 Bridesmaids Bouquets, 6 buttonholes, 2 pedestal arrangements, 1 registrars table flowers or 2 small displays for the fireplaces, Nightlights for the fireplace mantles and 12 tables arrangements.

CAKE BY LINDSAY PEMBERTON - Includes a 3 tier wedding cake either buttercream or fondant icing.

WEDDING SCENT BY FLORENCE AND BEE - 15 Waddesdon Emerald Scent Candles

STARTING FROM £42,500

## WEDDING 2

### THE GARNET



#### THE GARNET EXPERIENCE...

Includes exclusive hire of The Dairy for 48 hours, 2 night stay at The Dairy Cottage (including 2 double bedrooms and a beautiful breakfast hamper on the day of the wedding), use of all 16 rooms at the Five Arrows (including 1 Bridal Suite, 2 Luxury Suites), a luxury breakfast for overnight guests at The Five Arrows, ceremony facility fee, 6 uplighters, 2 oil lamp chandeliers, PA system, roof lighting and a dedicated point of contact from our team and a venue manager on the day. Access The Dairy from 8am on the day of your wedding and party the night away by making the most of our 12am license.

CATERING BY AP & CO - Includes canapes, sparkling drinks reception with cocktails, 3 course wedding breakfast with tea, coffee, petit fours and wine, an evening bar reception, late night bites, a dedicated team, table styling and furnishings, full cloakroom and a wedding service of your dreams.

FLORISTRY BY WILD AT HEART - Includes 1 Bridal Bouquet, 4 Bridesmaids Bouquets, 6 buttonholes, 2 urn arrangements, 2 mantelpiece arrangements, 1 registrars table flowers, 12 tables arrangements and 3 posier table arrangements.

CAKE BY THE ABIGAIL BLOOM CAKE COMPANY - Includes a 2 flavour, 6 tier wedding cake.

WEDDING SCENT BY FLORENCE AND BEE - 15 Waddesdon Garnet Scent Candles

STARTING FROM £82,500

*Contact us for further information.*



# WEDDING PRICING

2023	LOW SEASON JANUARY, FEBRUARY, NOVEMBER	MID SEASON (FRI, WEEKEND, BANK HOLIDAYS) MARCH, APRIL, OCTOBER	MID SEASON (MONDAY-THURSDAY) MARCH, APRIL, OCTOBER	HIGH SEASON (FRI, WEEKEND, BANK HOLIDAYS) MAY, JUNE, JULY, AUG, SEPT, DEC	HIGH SEASON (MONDAY-THURSDAY) MAY, JUNE, JULY, AUG, SEPT, DEC
GARNET	£82,500	£87,500	£85,500	£90,000	£87,500
EMERALD	£42,500	£47,500	£45,000	£50,000	£47,500

All prices quoted are inclusive of VAT, subject to  
change without notice and subject to contract.



We have two beautiful churches less  
than 10 minutes from Waddesdon:

ST. MICHAEL AND ALL ANGELS, WADDESDON



St. Michael and all Angels in Waddesdon can be seen from The Dairy and is a large imposing Grade II\* listed building dating from the 12th Century and can fit over 200 guests.

ST. MARY MAGDALENE, UPPER WINCHENDON



St. Mary Magdalene in Upper Winchendon is less than 10 minutes' drive from Waddesdon and is perched on a hill overlooking the valley, this little gem of a church has remained untouched since the middle-ages and can fit 150 guests.





## BESPOKE MENUS

We have carefully selected our preferred suppliers who will work with you on creating the perfect menu.



### CAVENDISH EVENTS

Buckinghamshire based specialists in amazing and exceptional luxury weddings.

[food@cavendishevents.co.uk](mailto:food@cavendishevents.co.uk)



### AP&CO

Designing events with the finest food and drink, in the most magnificent settings, delivered with impeccable service. That is AP&Co's purpose. London's go to luxury event caterer since 1981.

[enquiries@alisonprice.co.uk](mailto:enquiries@alisonprice.co.uk)



### LUSH BY TOM KERRIDGE

Founded and built on the values of the two Michelin-starred The Hand and Flowers. Dedicated to bringing the same sense of occasion, and memorable food to your event.

[hello@lushbytomkerridge.com](mailto:hello@lushbytomkerridge.com)



### HOST HOSPITALITY

"What sets us apart is our innovation, attention to detail and our ability to tailor our services around our clients' needs."

[events@hosthospitality.co.uk](mailto:events@hosthospitality.co.uk)





## TONY PAGE KOSHER

Inimitable reputation founded on an obsession to deliver on every detail.  
[www.tonypage.com](http://www.tonypage.com)



## PAYAL ASIAN / INDIAN

Luxury catering company, event planners and event production specialists.  
[info@payal.co.uk](mailto:info@payal.co.uk)



## BUBBLE

Bubble has been designing and catering spectacular luxury events for over 20 years. With accreditations at London's historic palaces, unique venues & contemporary spaces.  
[www.bubblefood.com](http://www.bubblefood.com)



## BEN TENENBLAT

"Since entering the catering market, Ben Tenenblat have redefined luxury Kosher cuisine, opening up a new world of culinary possibilities for their clients."  
[Info@Ben-Tenenblat.com](mailto:Info@Ben-Tenenblat.com)







## WORLD CLASS WINES



### WINES FROM OUR OWN ESTATES

We are proud to exclusively partner with Waddesdon Wine Limited. Waddesdon Wine was founded to jointly represent the three wine producing branches of the Rothschild family within the UK. They have now grown to represent a number of other prestigious family owned estates around the world. Our caterers will offer you a wide range of Rothschild wines to accompany your wedding breakfast.









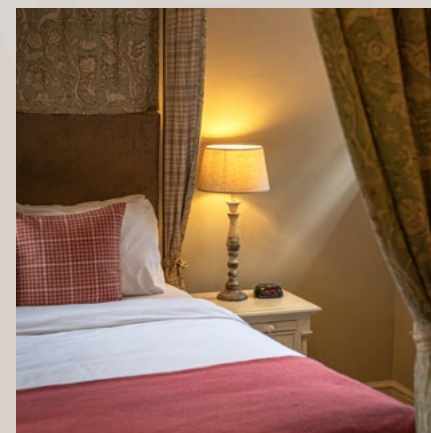


# THE FIVE ARROWS



## HOME FOR YOU AND YOUR GUESTS

All 16 of our bedrooms have been refurbished to the highest standard; maintaining the historical legacy of the Five Arrows, but adding a contemporary feel to maximise guest comfort. The decor has been chosen to emphasise the feeling of comfort and is inspired by nature, with soft, calm colours and layers of wools and linens.







## FURTHER ACCOMMODATION



### HARTWELL HOUSE

Adjoining the waddesdon estate sits hartwell house and spa, a 17th-century property set within 90 acres of gardens and parkland.

[waddesdonenterprises.co.uk/hartwell-house](http://waddesdonenterprises.co.uk/hartwell-house)

### THE DINTON HERMIT

Situated in the hamlet of Ford in a beautiful rural location, The Dinton Hermit is a charming 17th century Grade II listed country inn.

[thedintonhermit.co.uk/sleep](http://thedintonhermit.co.uk/sleep)



### LE MANOIR AUX QUAT'SAISONS

Created by celebrated chef Raymond Blanc OBE, Le Manoir aux Quat'Saisons is one of the country's most cherished manor house hotels.

[belmond.com](http://belmond.com)



# PLANNING



MRS T WEDDINGS  
[www.mrstweddings.com](http://www.mrstweddings.com)



ANN NICHOLAS WEDDINGS  
[www.ann-nicholas.com](http://www.ann-nicholas.com)



ROHITA PABLA  
[www.rohitapabla.co.uk](http://www.rohitapabla.co.uk)



BY CHENAI  
[www.bychenai.com](http://www.bychenai.com)

# TEMPORARY STRUCTURE



TITAN TENTS  
[www.titantents.co.uk](http://www.titantents.co.uk)



MARQUEES & PAVILIONS LTD  
[www.marpav.co.uk](http://www.marpav.co.uk)







# THE WEDDING CAKE

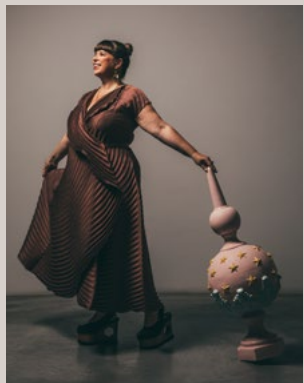
## JOANA VASCONCELOS

Wedding Cake - a 12-metre-high sculptural pavilion in the form of a three-tiered wedding cake, clad entirely in ceramic tiles - is a major new work by celebrated Portuguese artist Joana Vasconcelos (b 1971). Almost five years in the making, Wedding Cake was commissioned by the Rothschild Foundation for Waddesdon, prompted by the relationship between visionary collector Lord Rothschild and Vasconcelos.

Part sculpture, part architectural garden folly, Wedding Cake is an extraordinary, enormous fully immersive sculpture which combines patisserie and architecture. Gleaming and icing-like outside and in, it offers an intricate and richly sensory experience – glazed in pale pinks, greens and blues, beset with sculptural ornament and complete with the sounds of trickling water and a site-specific lighting scheme. Wedding Cake is Vasconcelos' most ambitious commission to date, described by the artist as “a temple to love” that celebrates festivity and marriage.

Inspired by the exuberant Baroque buildings and highly decorative ceramic traditions of Lisbon - where Vasconcelos lives and works - the work is also a contemporary response to the great Rothschild traditions of hospitality with echoes of 18th-century garden pavilions.

Couples will be given the option to go to the top of the sculpture and pose as cake toppers, the perfect photo opportunity for on your special day!





THE EPITOME OF BREATH-TAKING SPLENDOUR,  
WEDDINGS AT WADDESDON MANOR & GROUNDS  
WITH CAPACITIES UP TO 1000.



BROCHURE AVAILABLE ON REQUEST





[WWW.WADDESDONENTERPRISES.CO.UK](http://WWW.WADDESDONENTERPRISES.CO.UK)  
[ENTERTAINING@WADDESDON.ORG.UK](mailto:ENTERTAINING@WADDESDON.ORG.UK)  
01296 653 241